



WEST PLACER
GROUNDWATER
SUSTAINABILITY AGENCY

Sustainable Groundwater Management Act (SGMA)

Implementation in West Placer County



What we're covering today

- Background and need of Sustainable Groundwater Management Act
- Formation of Groundwater Sustainability Agency
- Components of Groundwater Sustainability Plan
- Placer's groundwater basin conditions
- Initial stakeholder assessment
- Your questions and comments



Sustainable Groundwater Management Act of 2014

- Enacted by state of California in 2015
- Framework for local groundwater basin management
- Bring together all stakeholders – agencies, groundwater users, public
- Groundwater Sustainability Agency must be formed by June 30, 2017
- Groundwater Sustainability Plan due by January 31, 2022
- Only applies to wells using more than two acre feet of water per year
average family of 4 uses less than one acre foot/year



**Sustainability
Goal**

**Sustainable
Groundwater
Management**

**Sustainable
Yield**

Managing Groundwater Sustainability

Managing with a goal to reduce/avoid:

- Lowering of groundwater levels
- Water quality degradation
- Seawater intrusion
- Depletions of surface water
- Land subsidence
- Reduction of groundwater storage



What is a Groundwater Sustainability Agency (GSA)?

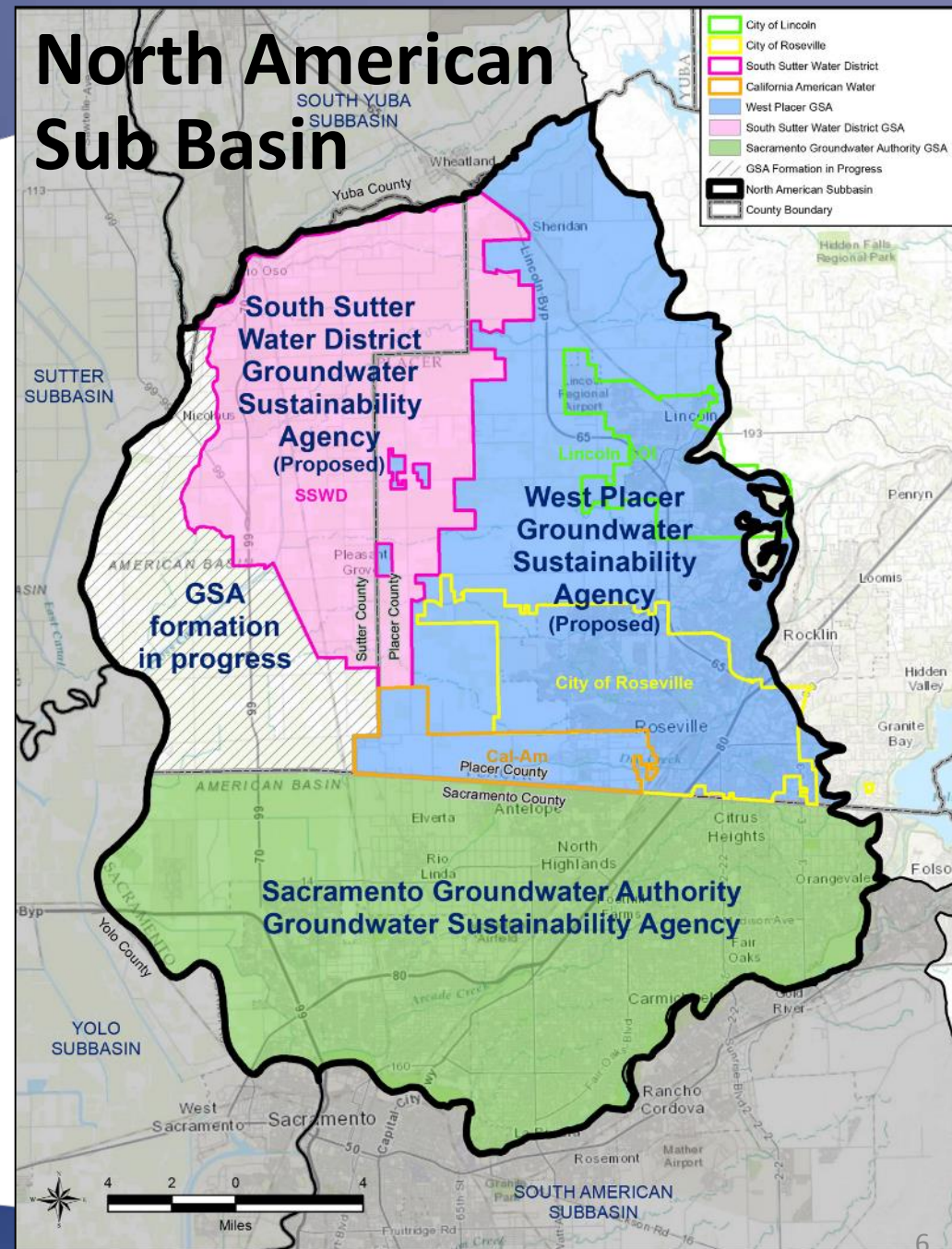
- One or more local agencies implementing the Sustainable Groundwater Management Act
- Any local public agency with water supply, water or land management authority
- Multiple agencies will need to coordinate to cover a groundwater basin



What is a groundwater basin?

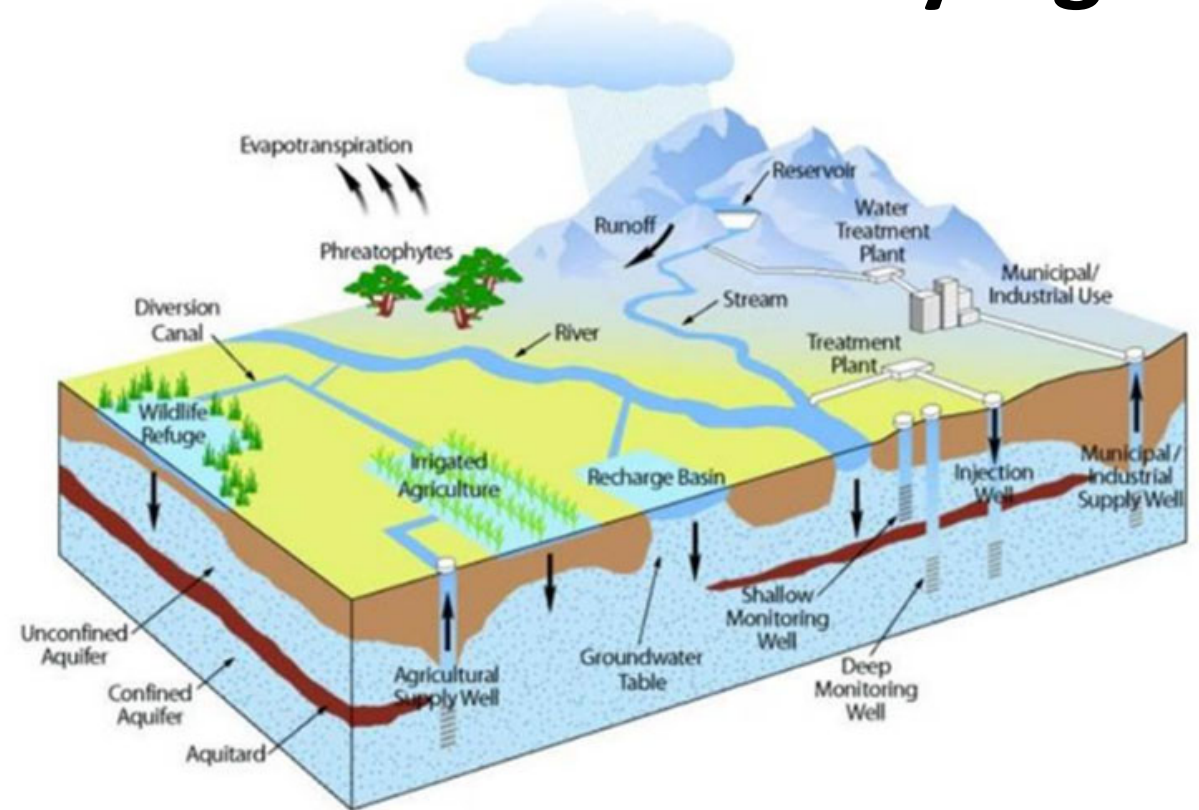
A defined area containing sediments that are capable of supplying or storing groundwater

What are the boundaries of the North American Sub basin?



Proposed West Placer Groundwater Sustainability Agency

- Covers portion of North American Sub Basin
- Forming Agencies:
 - City of Lincoln
 - City of Roseville
 - Placer County Water Agency (PCWA)
 - Placer County
 - Cal American Water (Cal Am)
- On track to be established by June 30, 2017





WEST PLACER
GROUNDWATER
SUSTAINABILITY AGENCY

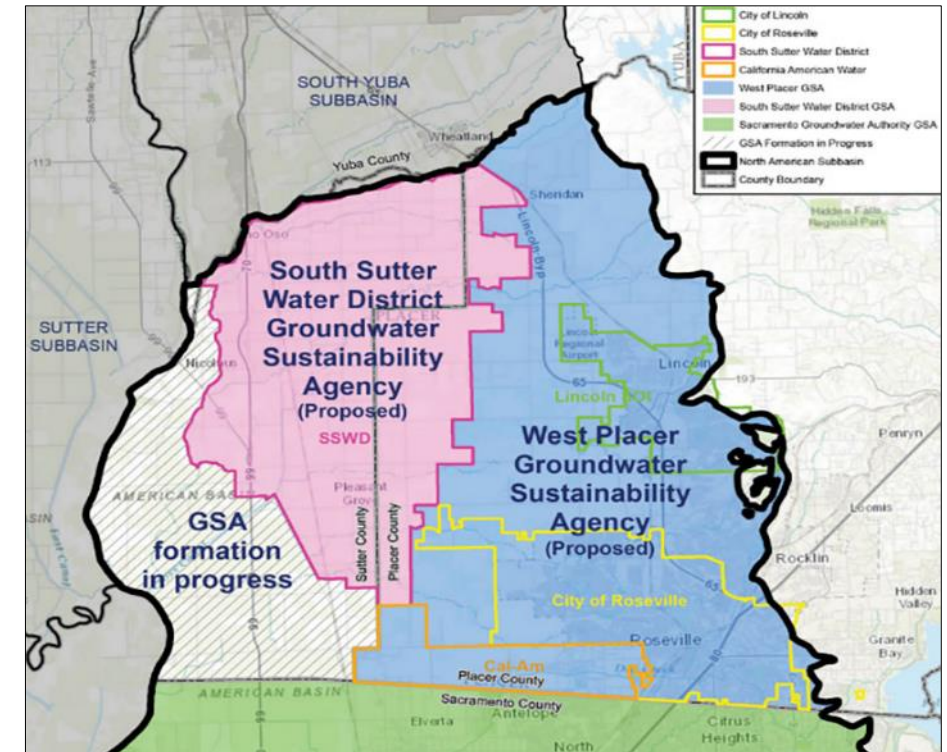
Proposed West Placer Groundwater Sustainability Agency

- Established working relationships
- Western Placer Groundwater Management Plan in effect since 2007
- West Placer Groundwater Sustainability Agency identity created



South Sutter Water District (Adjacent Agency)

- South Sutter District to manage a portion of Placer County
 - Memorandum of Agreement with Placer County ensures fair treatment of landowners
- Groundwater Sustainability Agencies will develop one plan together





Groundwater Sustainability Agency Requirements

- Carry out Groundwater Act
- Prepare, adopt and implement Sustainability Plan by 2022
- Conduct studies and monitor sustainability of the basin
- Engage all stakeholders
- Report annually to state and public





Groundwater Sustainability Agency Options

Additional tools allowed by law, if necessary:

- Adopt rules, regulations, ordinances and resolutions
- Conduct groundwater studies/investigations
- Register and monitor wells
- Require reports of groundwater extraction
- Implement capital projects to meet goals
- Assess fees to cover plan implementation

Groundwater Sustainability Plan (GSP)

- Public outreach necessary
- State Department of Water Resources (DWR) must approve plan
- Annual reporting, every five-years must evaluate plan
- Currently working toward one basin plan
 - More than one basin plan requires coordination & agreements
 - Multiple plans add cost and complexity
- Plan due January 31, 2022



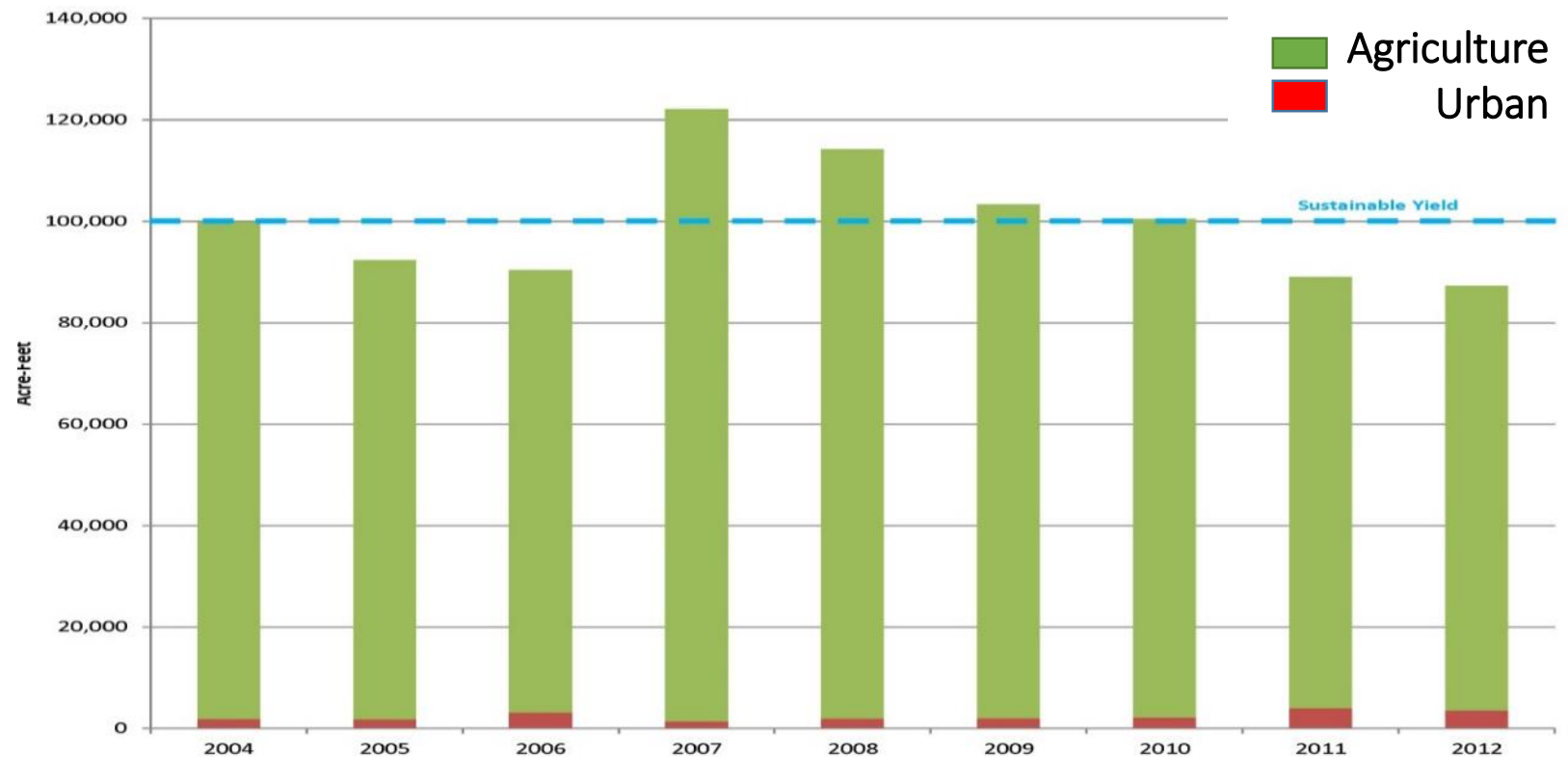


Plan Components



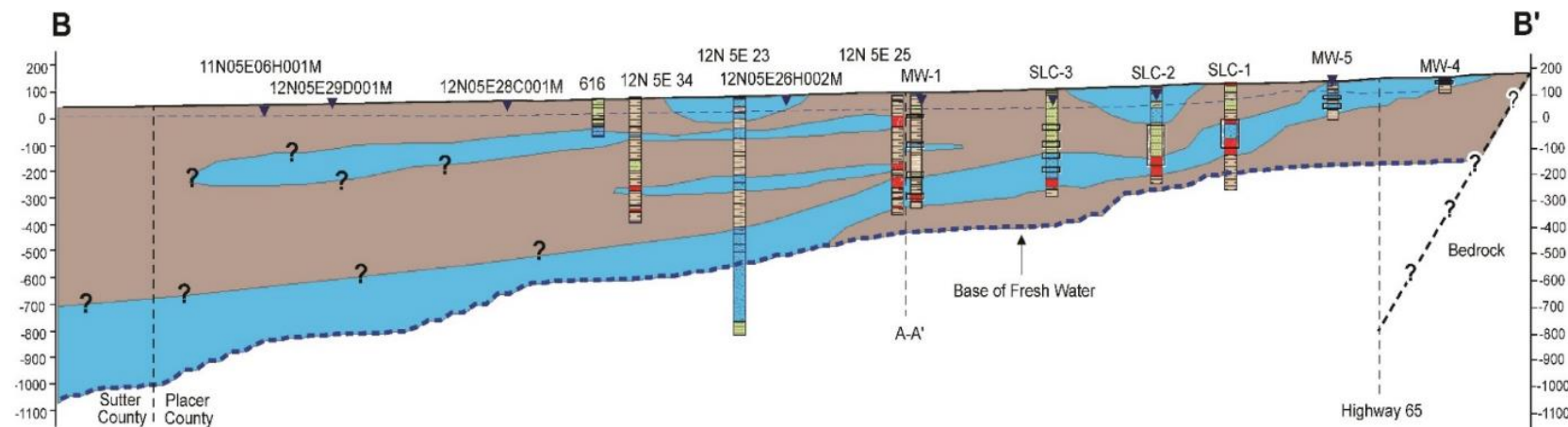
Who Uses Groundwater in West Placer?

- Over 90 percent of groundwater use is by agriculture
- Less than 10 percent is for municipal/domestic use
- Groundwater use varies – more in drought, less in wet years



West Placer - Hydrogeology

- Fresh water bearing sediments are thin to east and thicker to west, underlain by marine sediments
- Marine sediments are shallow to the east and at 1,000 feet deep to the west





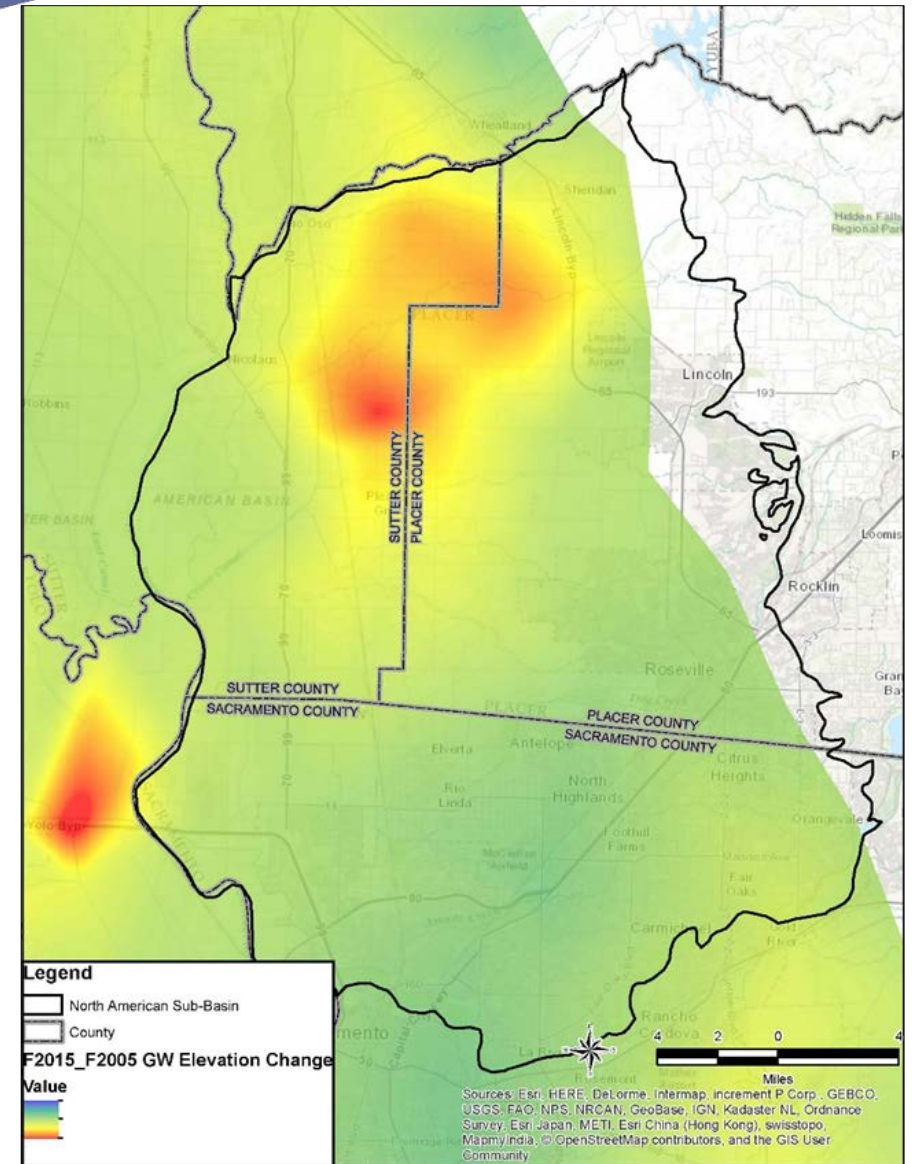
West Placer Groundwater Levels

- Groundwater levels measured by:
 - City of Lincoln, City of Roseville, PCWA, Placer County and DWR in 67 wells
- Department of Water Resources measurements go back to 1940s
- Local agencies measuring since 2004



Groundwater Level Changes 2005 to 2015

- Green: groundwater levels increased or decreased less than 10 feet
- Yellow: decline by 10 to 20 feet
- Red: decline by more than 20 feet





Summary of Groundwater Levels

- Most wells show levels within historic range
- North Lincoln levels showing decline
- Most levels recovered in 2016 after 2010-2015 drought



Subsidence: Land Settling

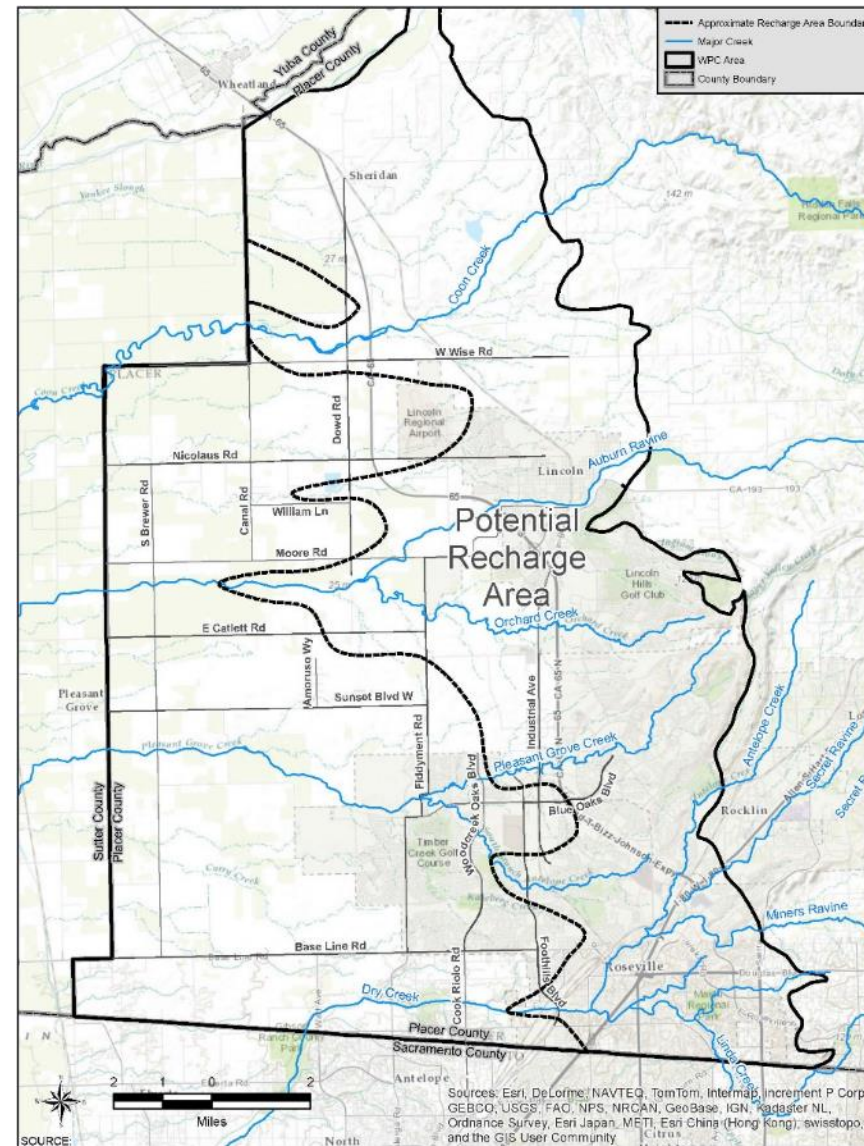
- Mid-century to 1991: up to 2.5 feet subsidence
- Recent: little to no subsidence
- Area has low potential for subsidence due to generally stable groundwater levels





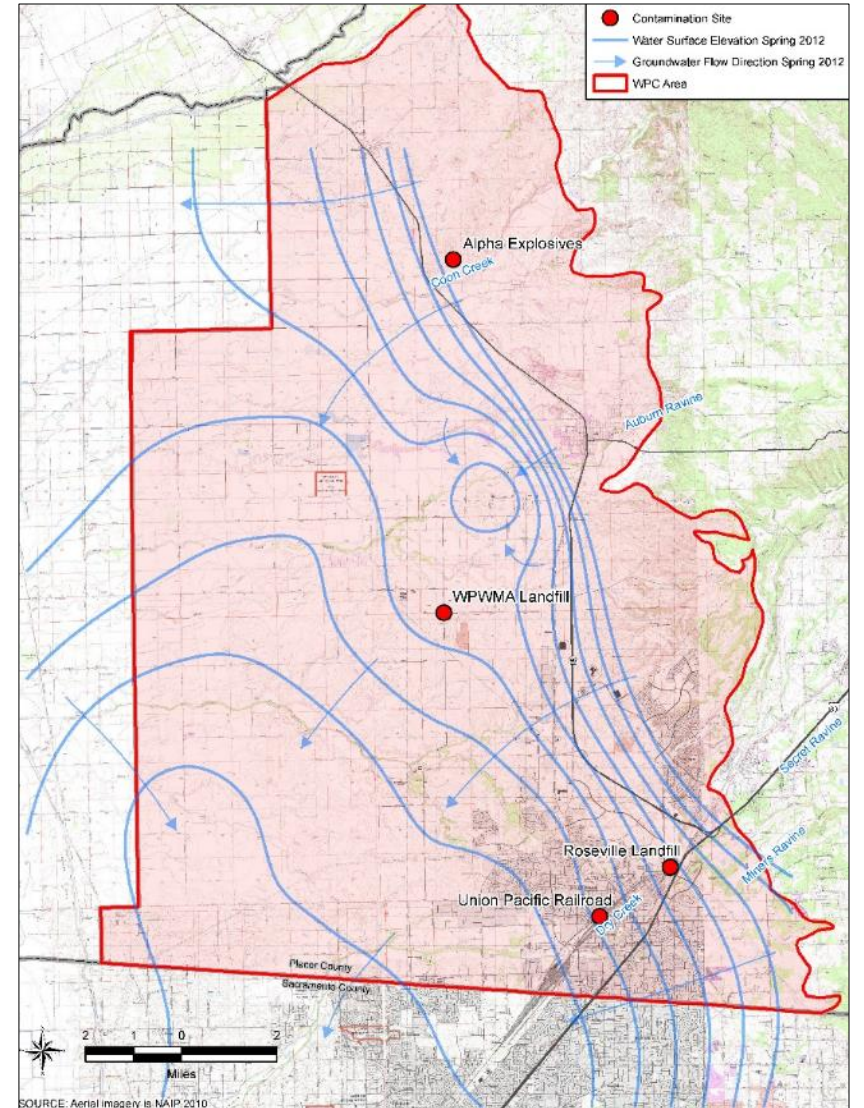
Surface Water/Groundwater Interaction in West Placer

- Interconnected - more so in the eastern portion of the basin
- Still under evaluation



Groundwater Quality

- Mostly good quality
- Localized poorer quality in Northeast due to marine sediments
- Four contamination sites under remediation





North American Sub Basin: West Placer Groundwater Conditions

- Groundwater levels are generally stable
- Concerns in northern and western areas being evaluated
- Water quality is generally good
- Subsidence is not a concern as long as levels remain stable
- Local recharge areas near creeks are being studied



Stakeholder Involvement

- Stakeholder: anyone who is interested
- Can provide input into decisions, how the act will affect you, what is important to you
- Groundwater Management Act requires a list of interested parties be maintained and engaged
- Need to engage stakeholders before forming Groundwater Sustainability Agency and developing Groundwater Sustainability Plan



Initial Stakeholder Assessment

- Conducted May - July 2016
- Multiple interviews
- Farmers, ranchers, residential pumpers, Agriculture Commissioner and related Placer, Sutter and Sacramento agencies





Questions Asked

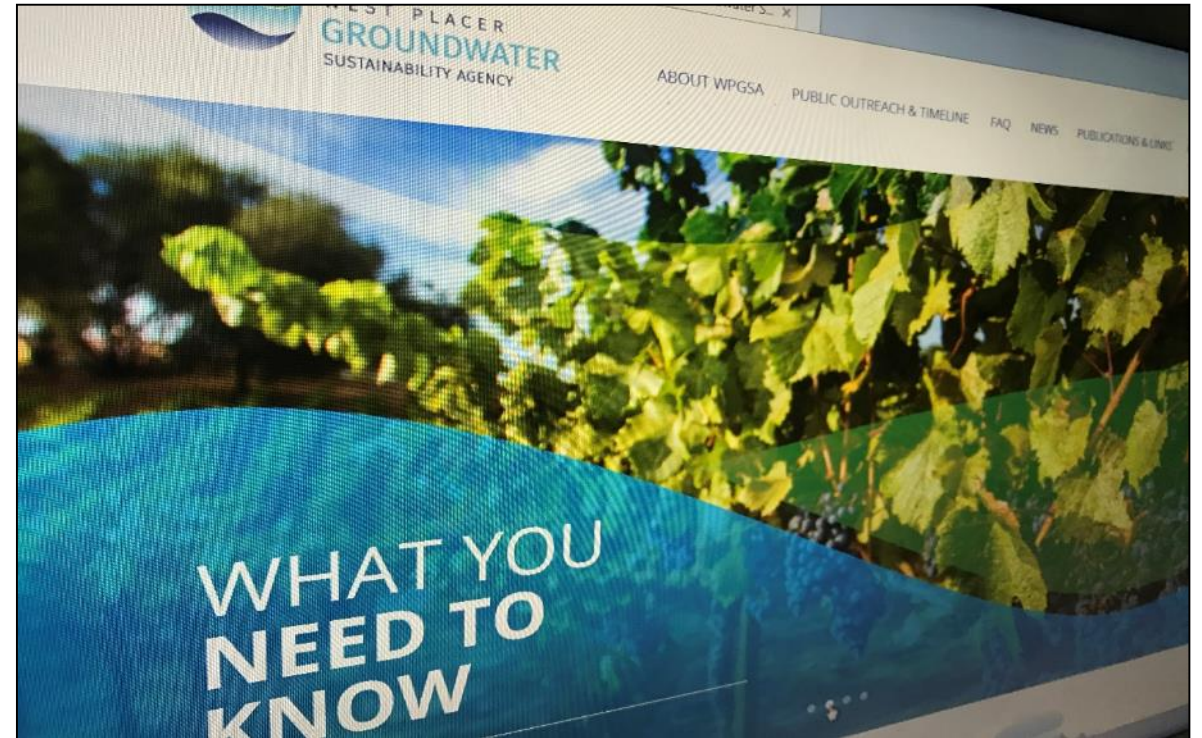
- Background
- Groundwater trends
- Information already received, from whom
- Relationships, advocates and conflicts
- Critical community events
- Information worth sharing
- Stakeholder processes that have worked
- When and where to have meetings
- Keys to successfully engaging
- Best ways to keep you informed
- Advice

What People Want to Know

- Why was Sustainable Groundwater Act established ?
- What is the process ?
- Is process fully vetted with stakeholder participation ?
- How to get involved ?
- Do local agencies support their agriculture communities ?
- Water, property rights affected ?
- Individual groundwater pumper requirements ?

How to Stay Involved and Informed

- Visit project website:
➤ westplacergroundwater.com
- Subscribe to email list
- Provide written comments
- Attend future stakeholder workshops





WEST PLACER
GROUNDWATER
SUSTAINABILITY AGENCY

Questions?



Groundwater Level Trends West Placer Monitoring Wells

- Green: within historic range
- Yellow: outside of historic range and declining

