



WEST PLACER
GROUNDWATER
SUSTAINABILITY AGENCY

Sustainable Groundwater Management Act (SGMA)

Implementation in West Placer County



Sustainable Groundwater Management Act of 2014

- Enacted by state of California in 2015
- Framework for local groundwater basin management
- Bring together all stakeholders – agencies, groundwater users, public
- Groundwater Sustainability Agency must be formed by June 30, 2017
- Groundwater Sustainability Plan due by January 31, 2022
- Only applies to wells using more than two acre feet of water per year
average family of 4 uses less than one acre foot/year



**Sustainability
Goal**

**Sustainable
Groundwater
Management**

**Sustainable
Yield**

Managing Groundwater Sustainability

Managing with a goal to reduce/avoid:

- Lowering of groundwater levels
- Water quality degradation
- Seawater intrusion
- Depletions of surface water
- Land subsidence
- Reduction of groundwater storage



What is a Groundwater Sustainability Agency (GSA)?

- One or more local agencies implementing the Sustainable Groundwater Management Act
- Any local public agency with water supply, water or land management authority
- Multiple agencies will need to coordinate to cover a groundwater basin

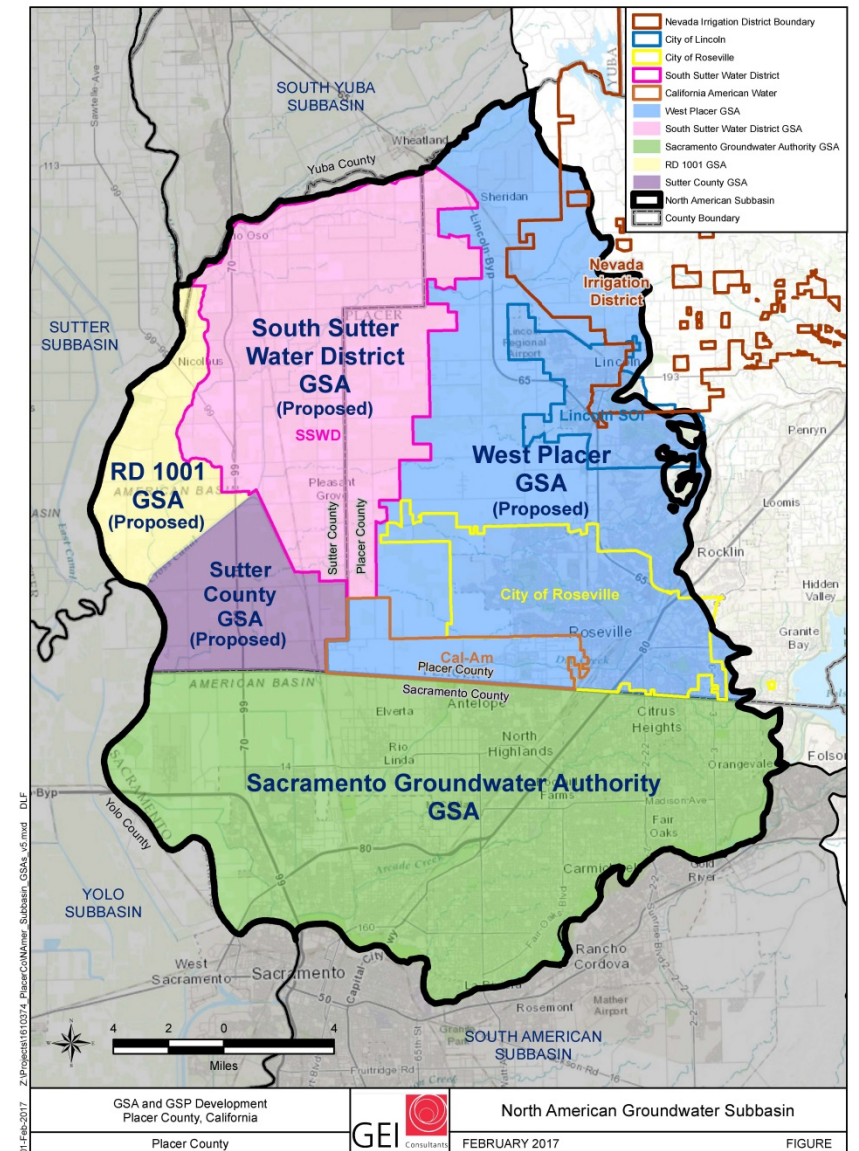


North American Sub Basin

What is a groundwater basin?

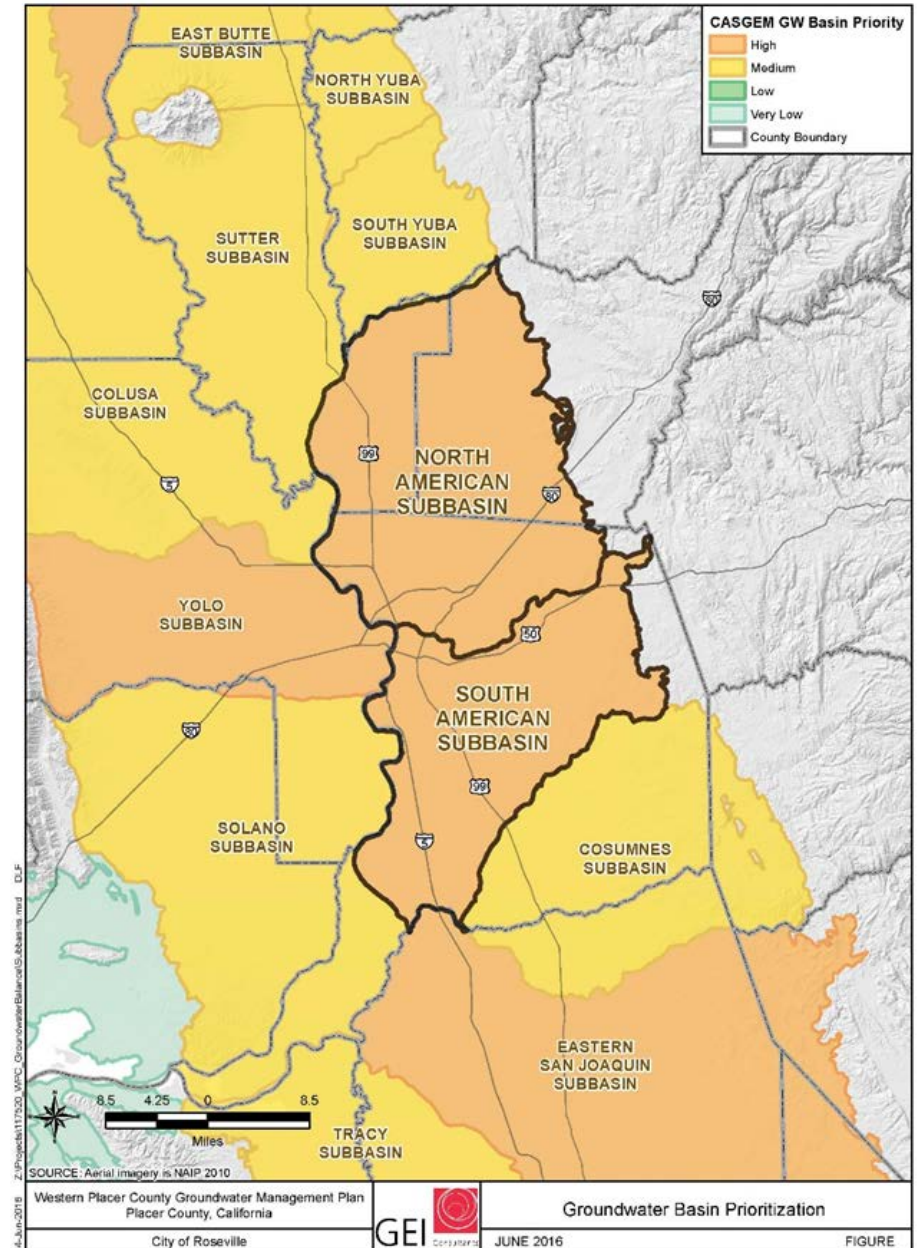
A defined area containing sediments that are capable of supplying or storing groundwater

What are the boundaries of the North American Sub basin?



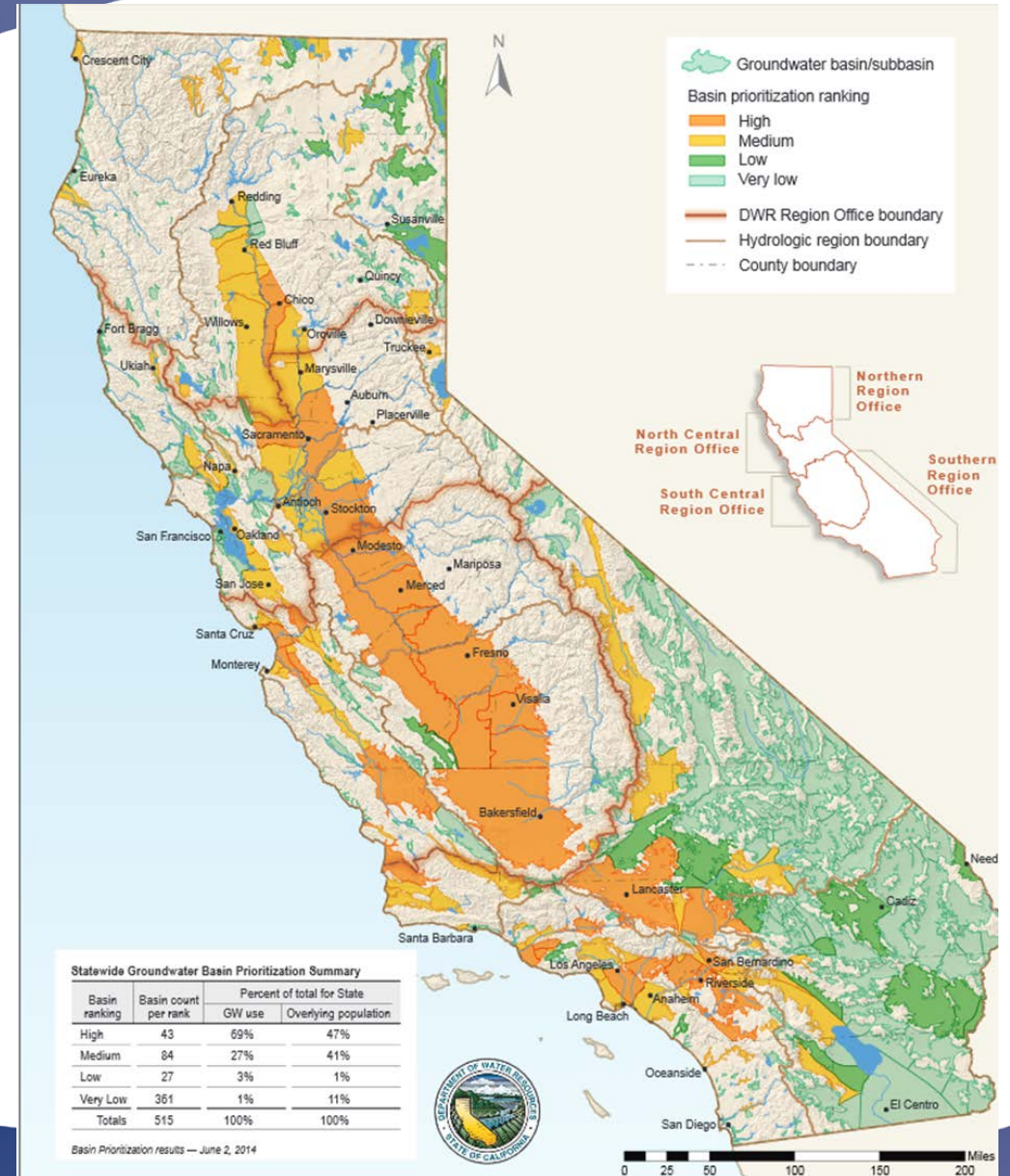


What are the boundaries of the North American Basin?



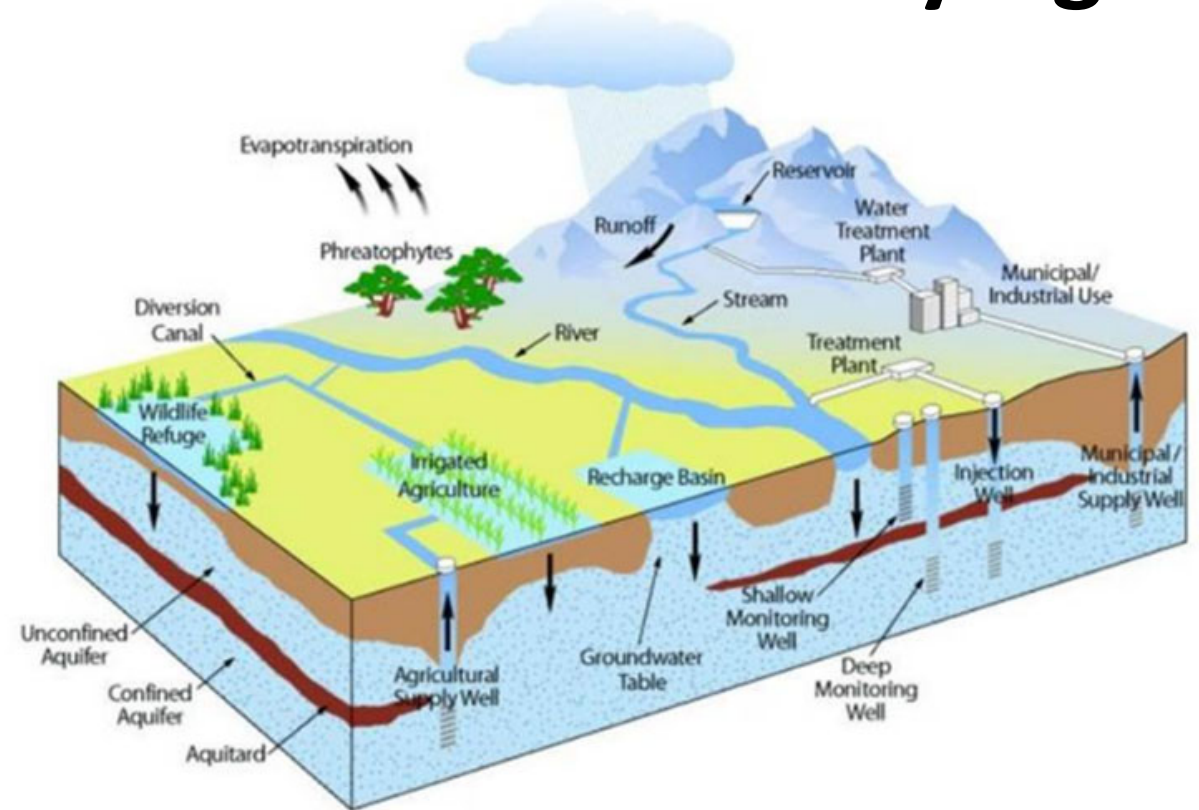


California View



Proposed West Placer Groundwater Sustainability Agency

- Covers portion of North American Sub Basin
- Forming Agencies:
 - City of Lincoln
 - City of Roseville
 - Placer County Water Agency (PCWA)
 - Placer County
 - Cal American Water (Cal Am)
 - Nevada Irrigation District (potentially)
- On track to be established by June 30, 2017





Groundwater Sustainability Agency Requirements

- Carry out Groundwater Act
- Prepare, adopt and implement Sustainability Plan by 2022
- Conduct studies and monitor sustainability of the basin
- Engage all stakeholders
- Report annually to state and public





Groundwater Sustainability Agency Options

Additional tools allowed by law, if necessary:

- Adopt rules, regulations, ordinances and resolutions
- Conduct groundwater studies/investigations
- Register and monitor wells
- Require reports of groundwater extraction
- Implement capital projects to meet goals
- Assess fees to cover plan implementation

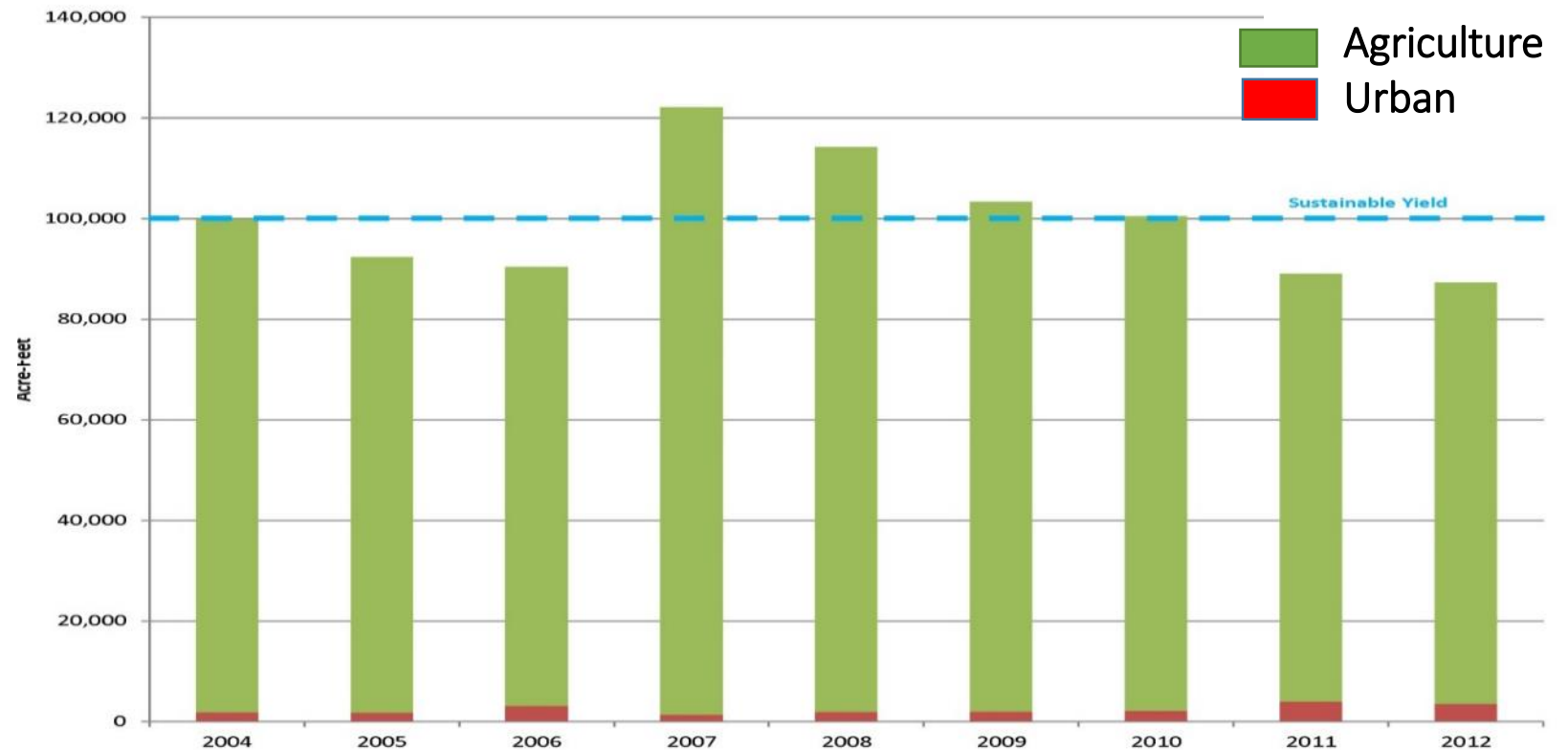
Groundwater Sustainability Plan (GSP)

- Public outreach necessary
- State Department of Water Resources (DWR) must approve plan
- Annual reporting, every five-years must evaluate plan
- Currently working toward one basin plan
 - More than one basin plan requires coordination & agreements
 - Multiple plans add cost and complexity
- Plan due January 31, 2022



Who Uses Groundwater in West Placer?

- Over 90 percent of groundwater use is by agriculture
- Less than 10 percent is for municipal/domestic use
- Groundwater use varies – more in drought, less in wet years



West Placer Groundwater Levels

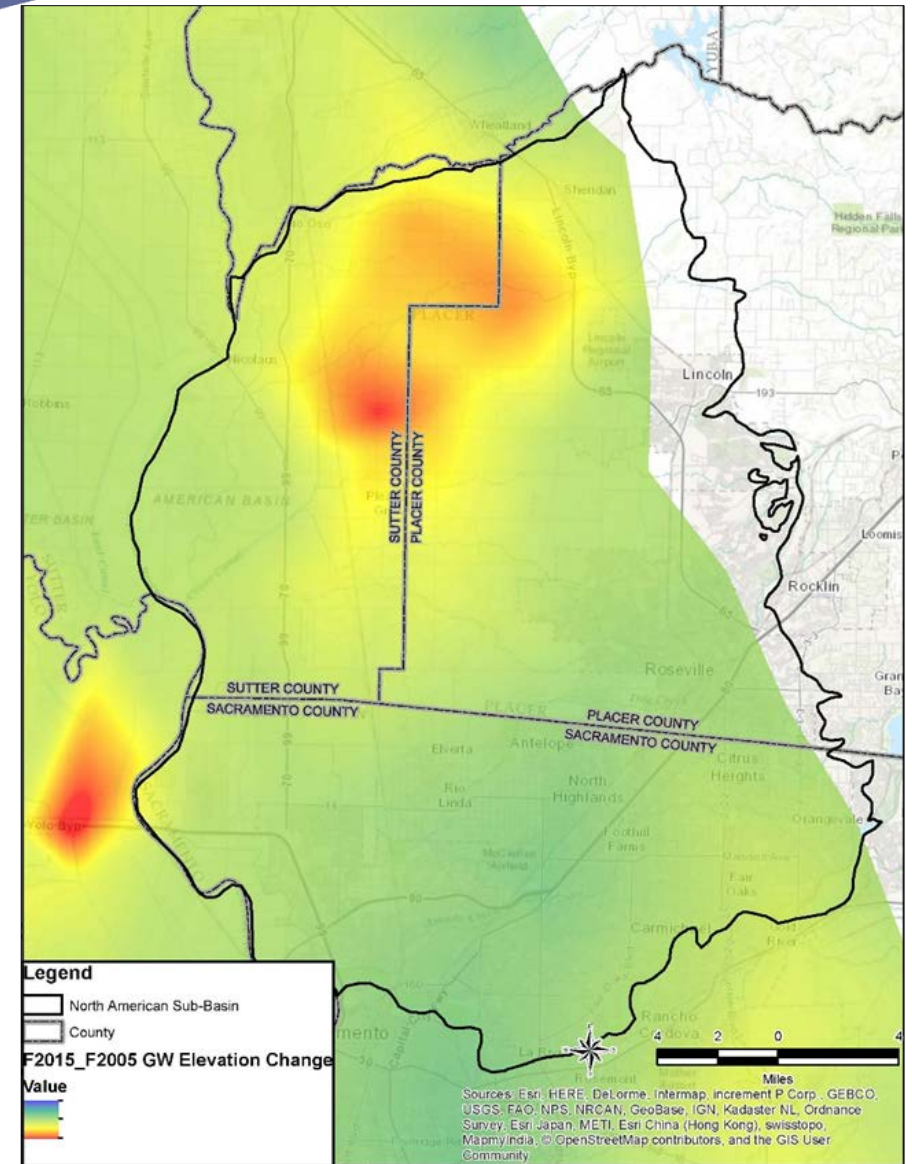
- Groundwater levels measured by:
 - City of Lincoln, City of Roseville, PCWA, Placer County and DWR in 67 wells
- Department of Water Resources measurements go back to 1940s
- Local agencies measuring since 2004





Groundwater Level Changes 2005 to 2015

- Green: groundwater levels increased or decreased less than 10 feet
- Yellow: decline by 10 to 20 feet
- Red: decline by more than 20 feet





North American Sub Basin: West Placer Groundwater Conditions

- Groundwater levels are generally stable
- Concerns in northern and western areas being evaluated
- Water quality is generally good
- Subsidence is not a concern as long as levels remain stable
- Local recharge areas near creeks are being studied



Stakeholder Involvement

- Stakeholder: anyone who is interested
- Can provide input into decisions, how the act will affect you, what is important to you
- Groundwater Management Act requires a list of interested parties be maintained and engaged
- Need to engage stakeholders before forming Groundwater Sustainability Agency and developing Groundwater Sustainability Plan

Initial Stakeholder Assessment

- Conducted May - July 2016
- Multiple interviews
- Farmers, ranchers, residential pumpers, Agriculture Commissioner and related Placer, Sutter and Sacramento agencies



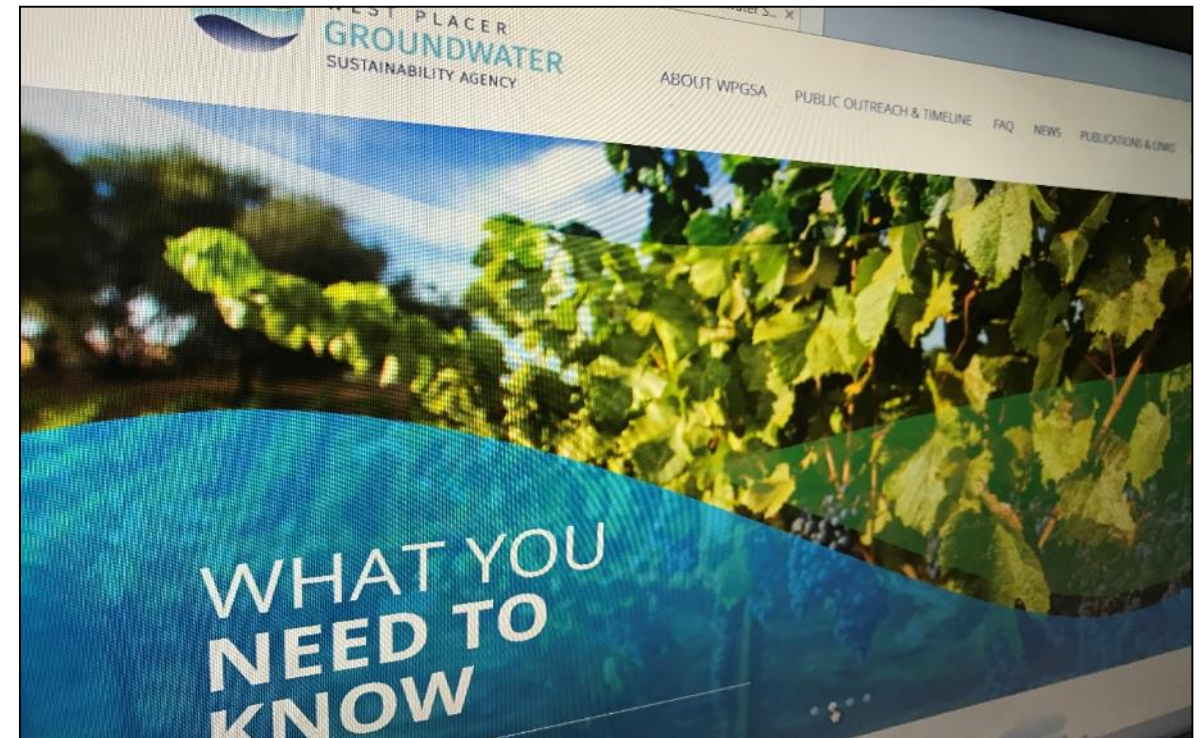


What People Want to Know

- Why was Sustainable Groundwater Act established ?
- What is the process ?
- Is process fully vetted with stakeholder participation ?
- How to get involved ?
- Do local agencies support their agriculture communities ?
- Water, property rights affected ?
- Individual groundwater pumper requirements ?

How to Stay Involved and Informed

- Visit project website:
➤ westplacergroundwater.com
- Subscribe to email list
- Provide written comments
- Attend future stakeholder workshops



Timeline to Meet State Requirements

- Memorandum of Agreement between parties:
 - Drafted and being reviewed; February, 2017 **Final: March 30, 2017**
- Agencies bring for approval: Month of April, 2017
 - Resolution of creation of GSA, Map & Boundaries (GIS shape files), MOA
- Within 30 days of last agency adopting; File package : May, 2017
 - Resolution of creation of GSA, Map & Boundaries (GIS shape files), MOA
 - Public outreach documentation
 - Letters of support

***West Placer
Welcomes NID to join us***



WEST PLACER
GROUNDWATER
SUSTAINABILITY AGENCY

Questions?



WEST PLACER
GROUNDWATER
SUSTAINABILITY AGENCY

Back Up Technical Slides

Summary of Groundwater Levels

- Most wells show levels within historic range
- North Lincoln levels showing decline
- Most levels recovered in 2016 after 2010-2015 drought



Subsidence: Land Settling

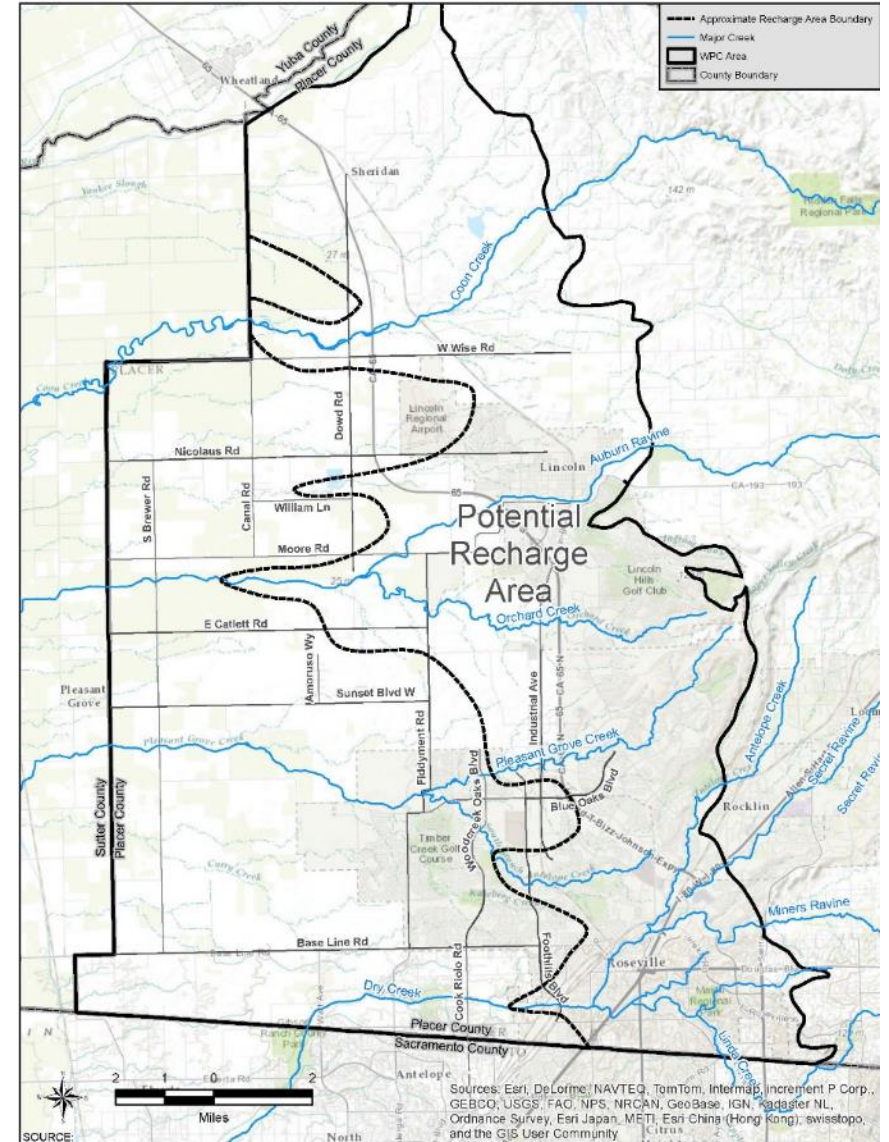
- Mid-century to 1991: up to 2.5 feet subsidence
- Recent: little to no subsidence
- Area has low potential for subsidence due to generally stable groundwater levels





Surface Water/Groundwater Interaction in West Placer

- Interconnected - more so in the eastern portion of the basin
- Still under evaluation





Groundwater Quality

- Mostly good quality
- Localized poorer quality in Northeast due to marine sediments
- Four contamination sites under remediation

